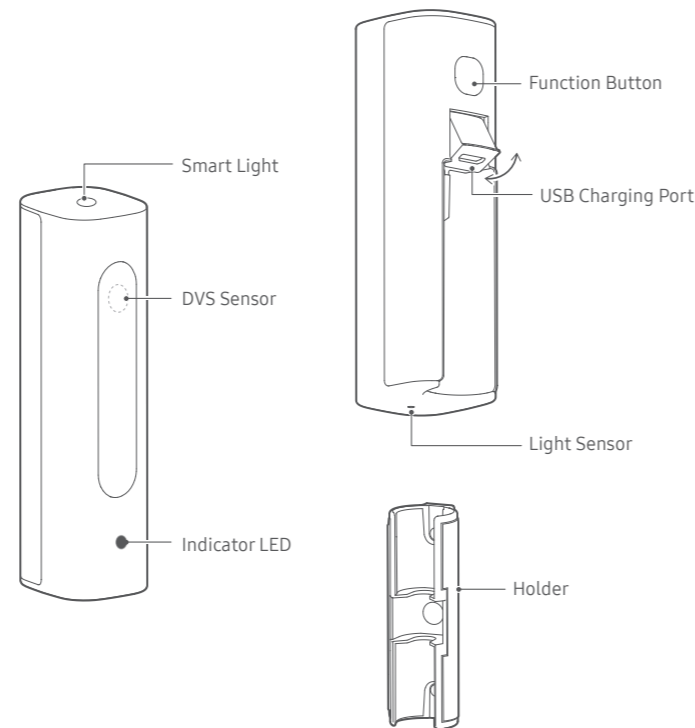
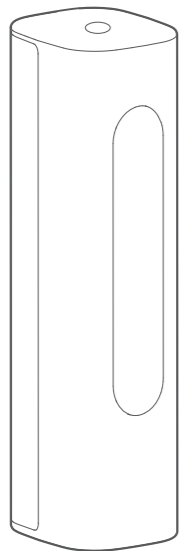
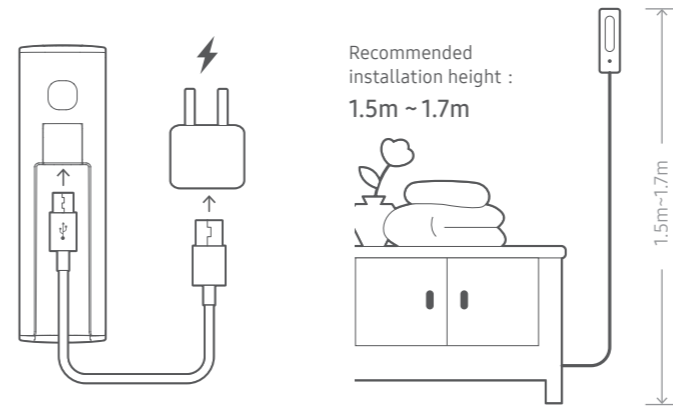


Welcome to your SmartThings Vision



Installation Guide



1. Indoor installation is recommended. Avoid installing in wet or humid place, otherwise it may cause malfunctions.
2. Avoid installing in high temperature environment or near a radiator, heating device, stove, and other heat sources (including an amplifier).
3. This product must be attached to flat and clean wall surface. Remove the film on the tape before use. In addition, holder can be attached to iron surface or furniture by utilizing magnet on the holder.
4. Avoid installing on the appliances that generate vibration, such as refrigerator or air conditioner. Otherwise it may cause malfunctions.
5. Since this product connects to WI-FI, please avoid installing it near devices that emit strong EM waves.

Trouble Shooting

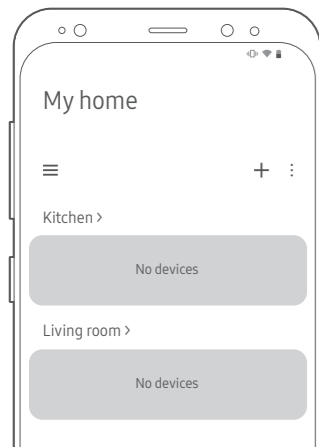
1. In the event of Internet is disconnected:
The indicator light shows red. Please check your internet connection.
2. In the event of device fails to operate:
Please unplug the power cable and plug again after 1 minute. If this status persists, press and hold the function button for more than 7 seconds to reset the device.
* Reset takes several minutes. Please do not unplug the power cable before indicator LED status alternately flashes green and red light.
3. In the event of app fails to operate:
Please re-start the app. If this status persists, please visit www.SmartThings.com.

Status	LED Status Indicator		
Power off	○	No light	
Power on	●	Green On	
System boot	☀	Green Blinking	
Setting standby status	●→●	Alternately flashes green and red light	
Setting error	☀	Red Blinking	
Person detected	☀	Yellow Blinking for 3 seconds	
Error	Function error	☀	Red Blinking
	Network error	●	Red On

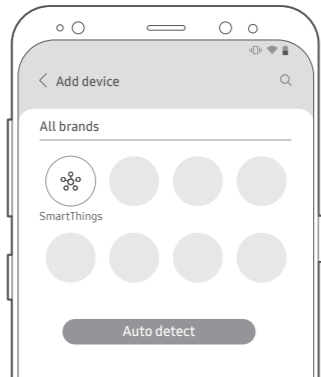


SmartThings

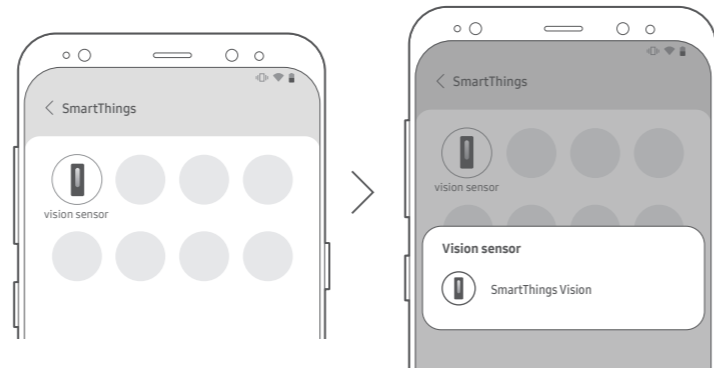
1. Connect your phone to WI-FI where device is used, and download SmartThings App.



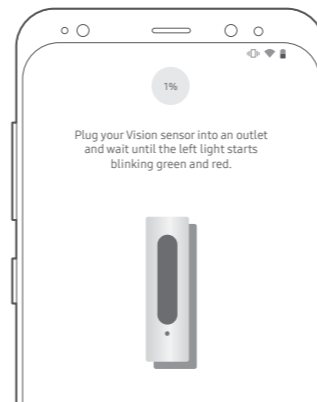
2. After login, select "+", and add device.



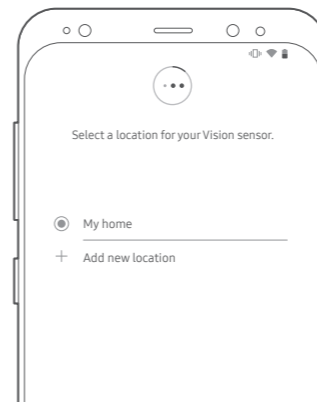
3. Select "SmartThings", in the "All brands" tab.



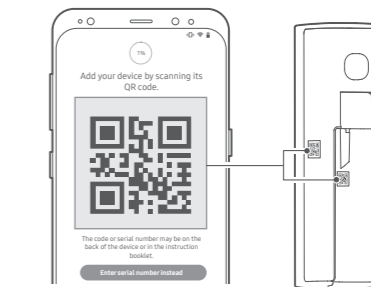
4. After click "Vision sensor", select "SmartThings Vision".



5. Plug the power cable, and wait LED indicator flashes green and red alternately.



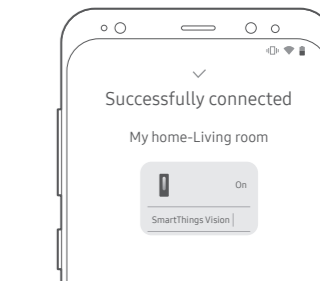
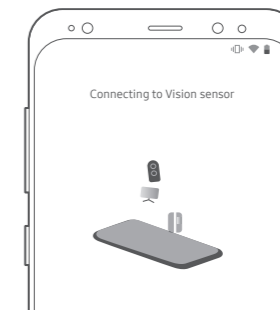
6. After setup location for your SmartThings Vision, click next.



8. The installation will begin after scanning QR code.

7. Scan the QR code on the device, as shown in the picture.

※ If QR code on device or package is damaged or fell off, device will be unable to setup. Please keep QR code safe.



9. After the installation is finished, completion status is as shown in the picture.